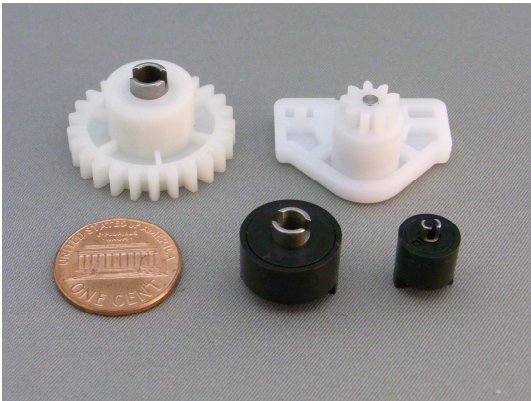


Origin

Compact size ・Dual-direction Torque Limiter

OTLS

Origin Torque limiter OTLS types are new line-up to our current OTLC and OTLV series. It is miniaturized and improved the backlash by changing its mechanism from the oil spring to the flat spring.



■ Features

1. Compact size and light weight

Outer diameter: $\phi 9$, weight:0.9gw. Reduction in size and weight from our current products OTLC and OTLV.

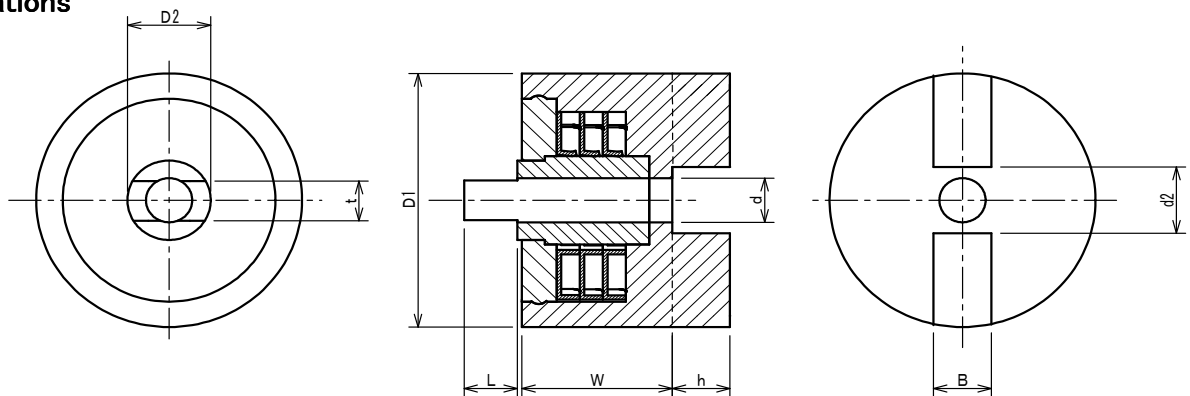
2. Rotates in both directions

Used for the application requires turning both directions (Clockwise and Counter-clockwise).

3. Improved the start-up torque

Minimized back-lash and improved the responsiveness compared to our standard OTLC and OTLV types.

■ Specifications



Parts Number	Torque Setting Value (Torque control range at shipping)	Allowable Rotation Speed [rpm]	Dimensions [mm]								
			Outer Dia. D1 $\begin{smallmatrix} 0 \\ -0.2 \end{smallmatrix}$	Outer Dia. D2 ± 0.05	Bore d $\begin{smallmatrix} +0.1 \\ 0 \end{smallmatrix}$	Width W ± 0.2	Slot Length L $\begin{smallmatrix} 0 \\ -0.2 \end{smallmatrix}$	Slot Width t $\begin{smallmatrix} +0.1 \\ 0 \end{smallmatrix}$	Boss Gap d2 ± 0.1	Boss Width B ± 0.1	Boss Height h ± 0.1
OTLS2-□□□A	100~400 $\pm 20\%$	100	9	2.8	2	7	2.3	1.8(凸)	3	2.5	2.5
OTLS4-□□□	400、800、1200 $\pm 20\%$	customized support	15	5.5	4	7	2.5	2.1(凹)	$\phi 4.4$		

※OTLS6-□□□のスリワリ部形状は上部写真を参照下さい

■ Operation Environments

Operation Conditions	Operation Environment
Temperature	0 ~ 60 °C
Humidity	Less than 90%RH 以下

■ Shaft Applications

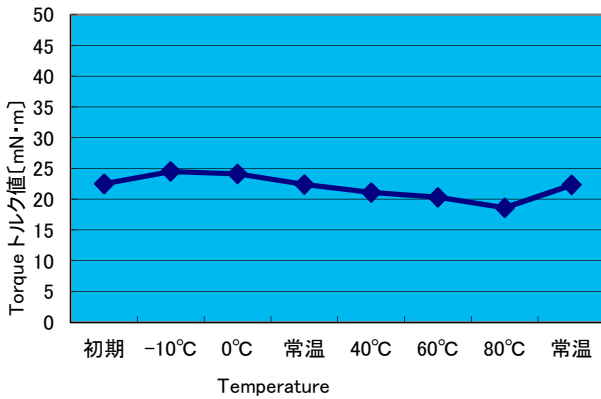
Items	Shaft Specifications
Outer Diameter(OTLS2)	$\phi 2 \begin{smallmatrix} 0 \\ -0.03 \end{smallmatrix}$
Outer Diameter(OTLS4)	$\phi 4 \begin{smallmatrix} 0 \\ -0.03 \end{smallmatrix}$
Materials	SUM ・SUS ・SUJ-2 recommended

Note : Please consult us if you use this product in the operation environment other than above.
The operation environment described here is based on our own experiences and testing data.
Please consult us for how to apply stopper on the inner ring.
The stopper for OTLS4 is a pin or a spring pin.

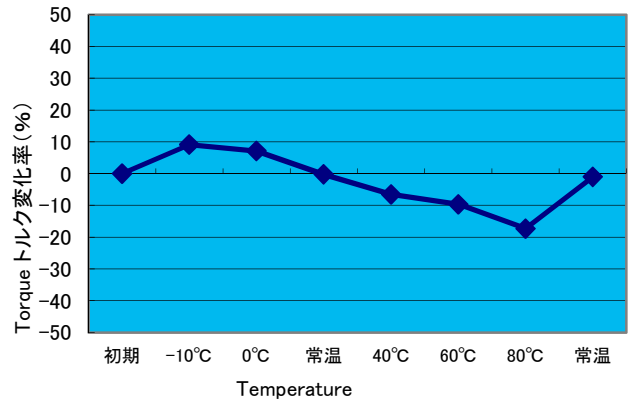
Reference Data

Temperature characteristics

OTLS2-250A Temperature change data

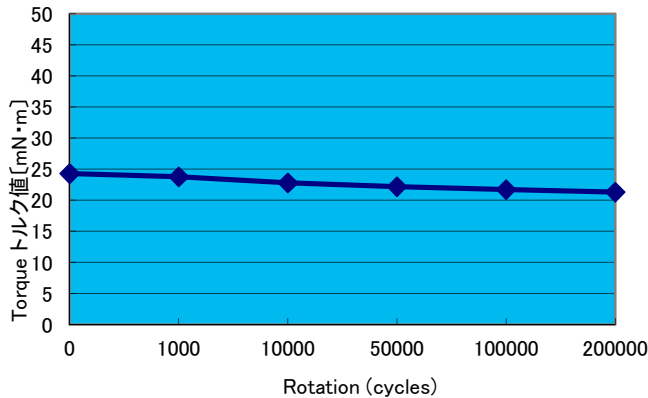


OTLS2-250A Temperature change data

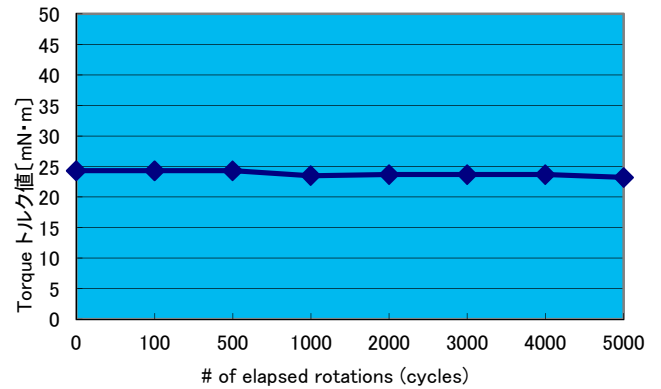


Reliability (Durability)

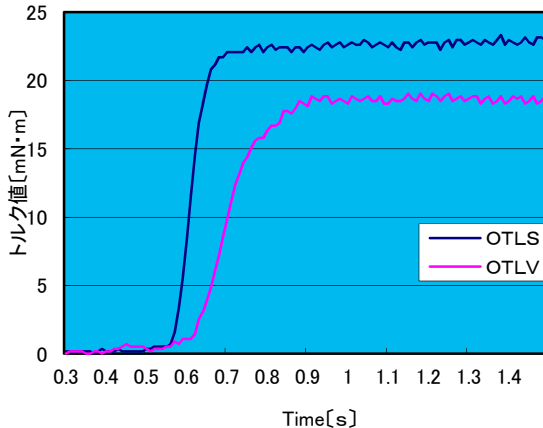
OTLS2-250A Reliability
(100rpm one direction, Room Temp)



OTLS2-250A Reliability
(100rpm one direction room temp, 7sec ON, 3sec OFF)



OTLS-OTLV Torque of initial stag



Cautions

Cares must be taken when mounting the Torque limiter since the torque may vary when unbalanced loads are applied in the radial and /or direction. Since the operation environment described here is based on our experiences and testing data, it may not be applied to the products in same way under different circumstances. For this reason, we do not guarantee that the content of this catalogue will apply to your operation condition exactly in the same way. Please make final decision at one of your company premises before using this product.

* Specifications are subject to change without a notice for future



オリジン電気株式会社

Origin ELECTRIC CO., LTD.

Origin Electric America Co.,Ltd.

3848 Carson Street Suite 216,
Torrance, CA 90503, USA
TEL : +1-310-540-6750
URL : <http://www.origin-usa.com/>

Origin Electric Co.,Ltd.(JAPAN)

3-10-5, Akatsuki, Oyama-shi,
Tochigi-ken, 329-0211, Japan
TEL : +81-285-45-1111
URL : <http://www.origin.co.jp/>

Hong Kong Branch

Unit 5,5/F, Laws Commercial Plaza,
788 Cheung Sha Wan Road, Kowloon, H.K.
TEL : +852-2314-8811